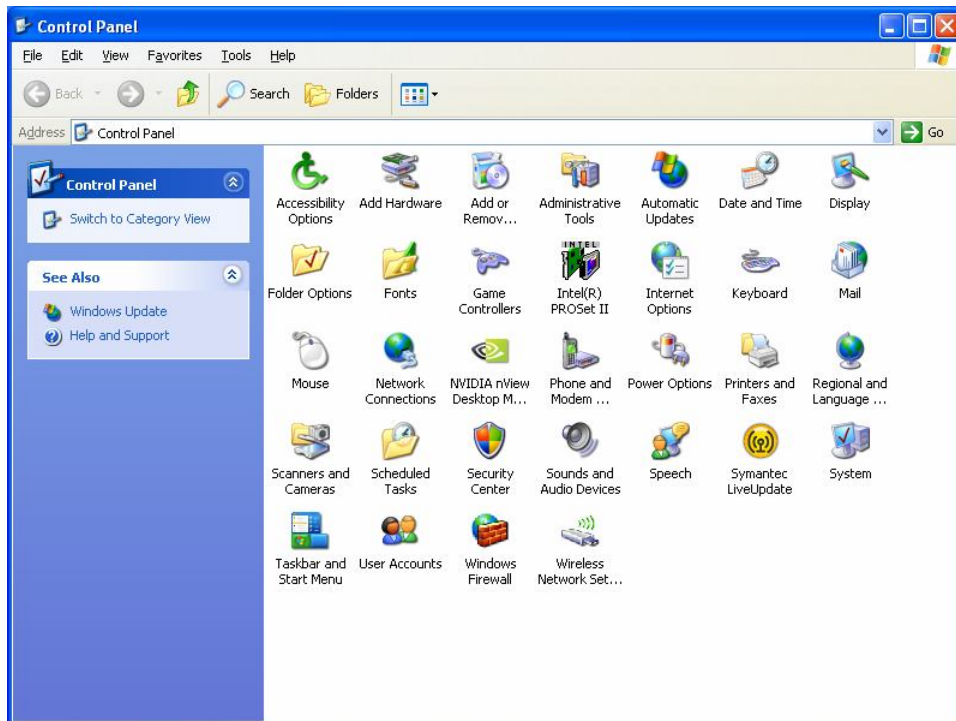


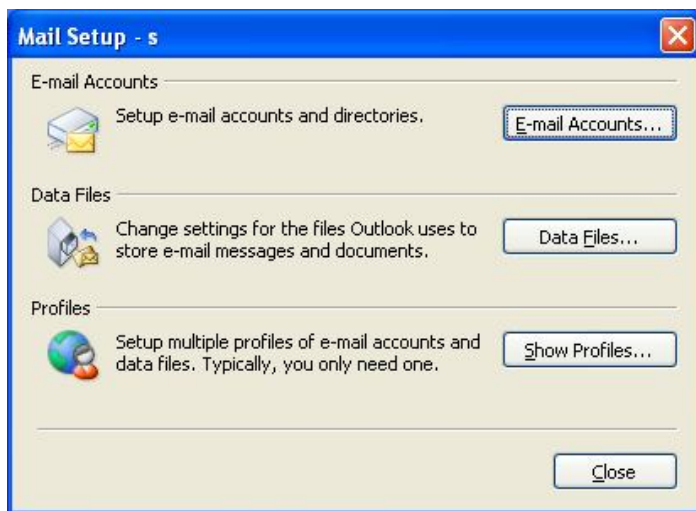
Outlook 2003 Configuration for RPC over HTTP

This document contains instructions for configuring outlook 2003 client or RPC over HTTP to access your VIRE Technologies hosted exchange email.

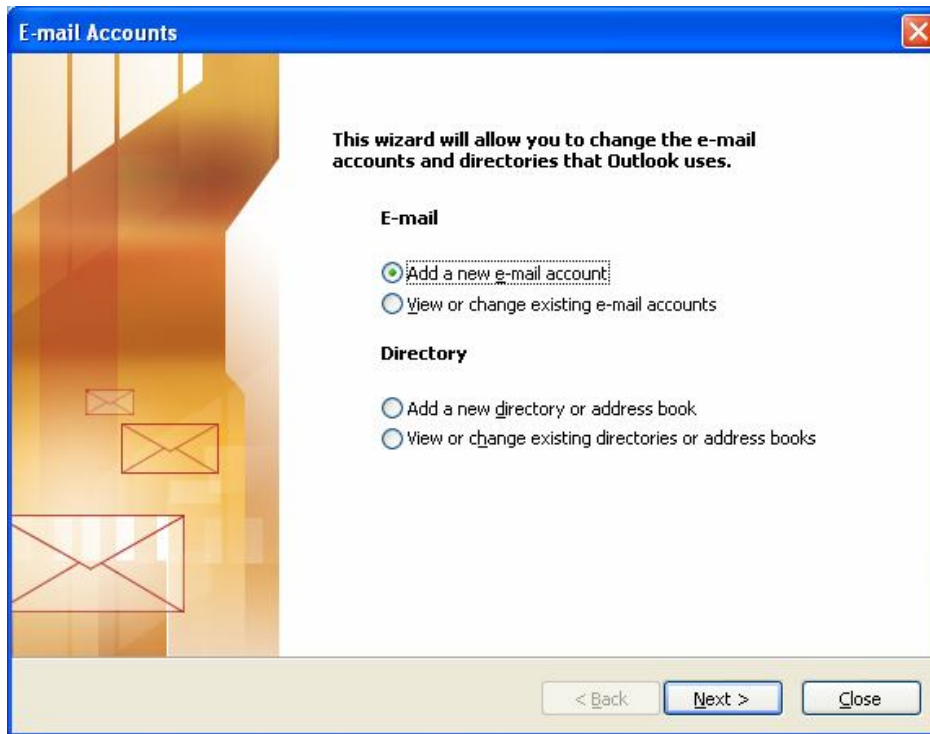
1. Install outlook 2003 on the client machine if you have not already done it.
2. Open up control panel and double click on mail icon.



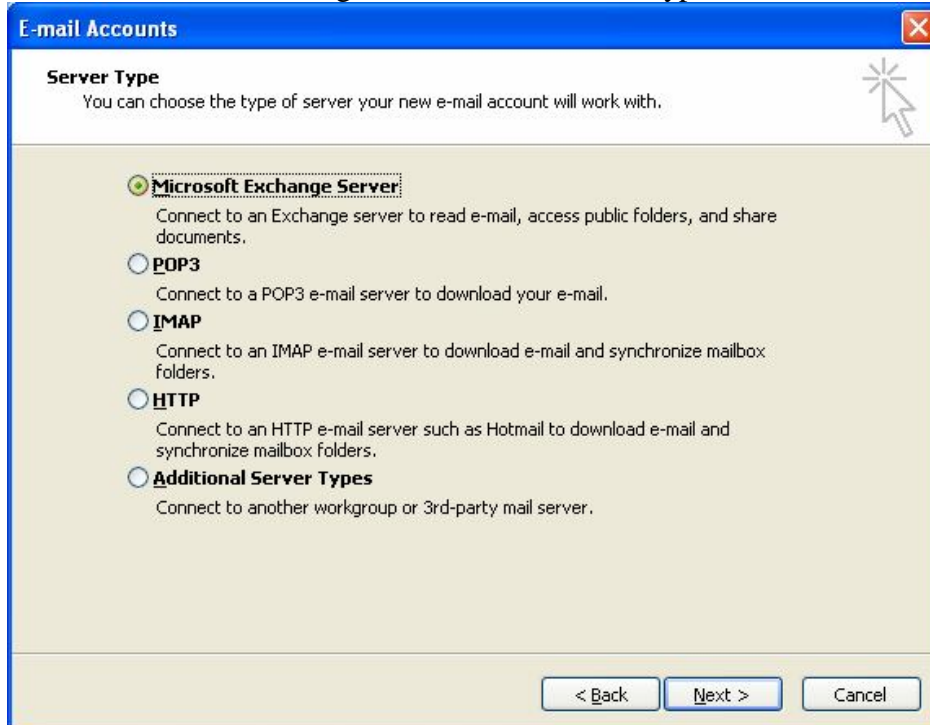
3. Click on E-mail Accounts on the Mail Setup window.



4. Make sure that “Add new e-mail account” is selected and click “Next >”.

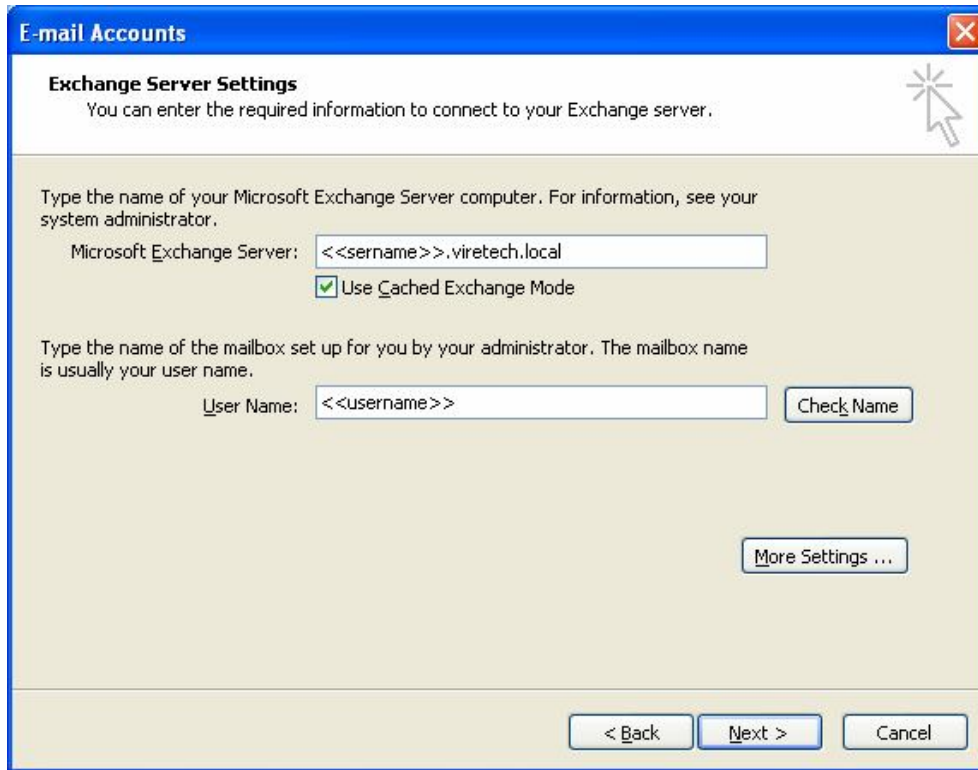


5. Select “Microsoft Exchange Server” on the server type window and click “Next”



6. Type in the FQDN on the server name in the “Microsoft Exchange Server” window and username in the “User Name” window. (To obtain the FQDN of the server and username log into your VIRE Technologies online customer portal

then go to manage and click on modify user. In almost every case the server name would be <<servername>>.viretech.local)

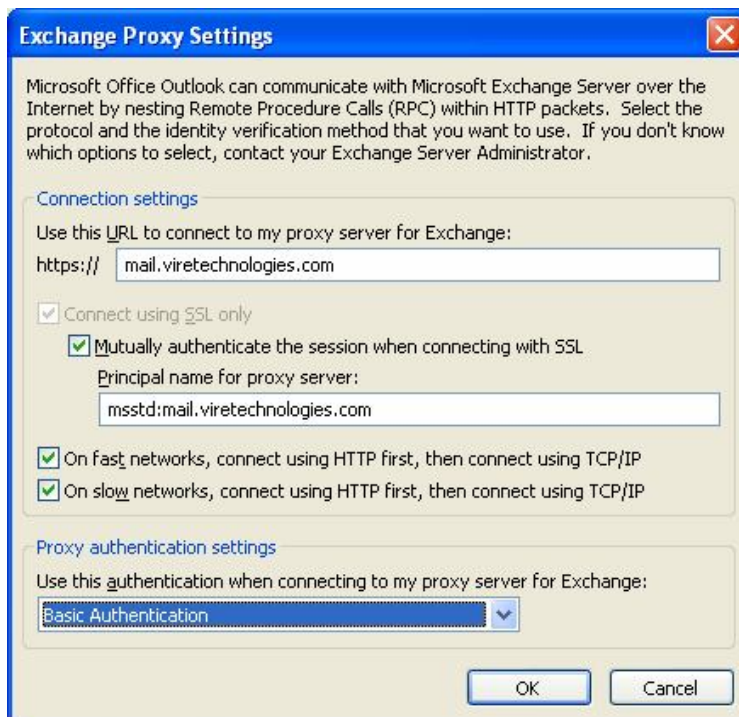


7. Click on more setting button and go to the “Connection” tab.

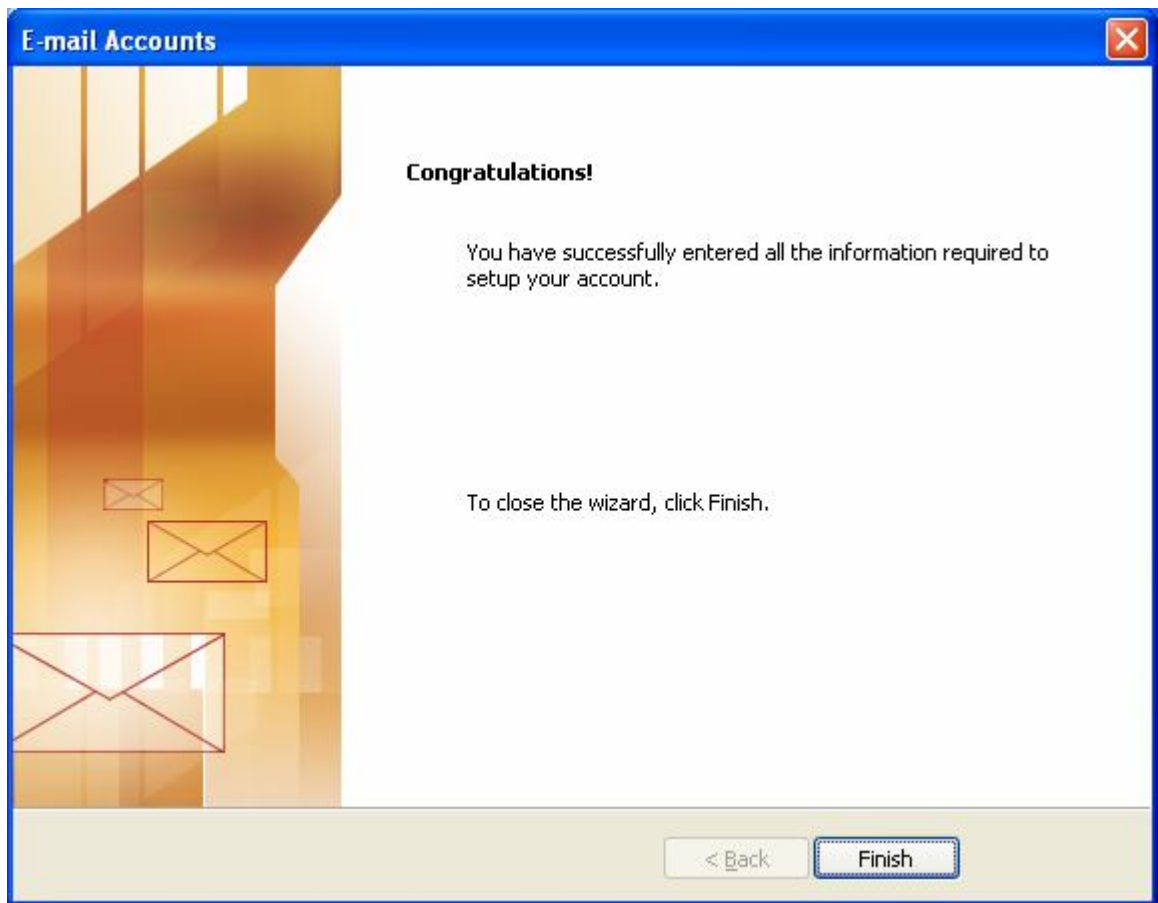


VIRE Technologies – Instructions for configuring outlook 2003 for RPC over HTTP

8. Check the box next to “Connect to my Exchange mailbox using HTTP” and click on “Exchange Proxy Setting”.
9. Type in “mail.viretechnologies.com” in the window labeled “Use this URL to connect to my proxy server for Exchange”.
10. Check the box next to “Mutually authenticate the session when connecting with SSL” and type “msstd:mail.viretechnologies.com” in the “Principal name for proxy server” window.
11. Make sure boxes next to “On fast networks, connect using HTTP first then TCP/IP” and “On slow networks, connect using HTTP first then connect using TCP/IP” are checked.
12. Select basic authentication in the “Proxy authentication settings” drop down menu.



13. Click “OK” on the Exchange Proxy Settings windows and then OK on “More settings” window.
14. Click “Next >” on “Exchange Server Settings” window.
15. Click “Finish” on the confirmation window.



16. Your outlook configuration is complete. You can launch you outlook to send and receive email